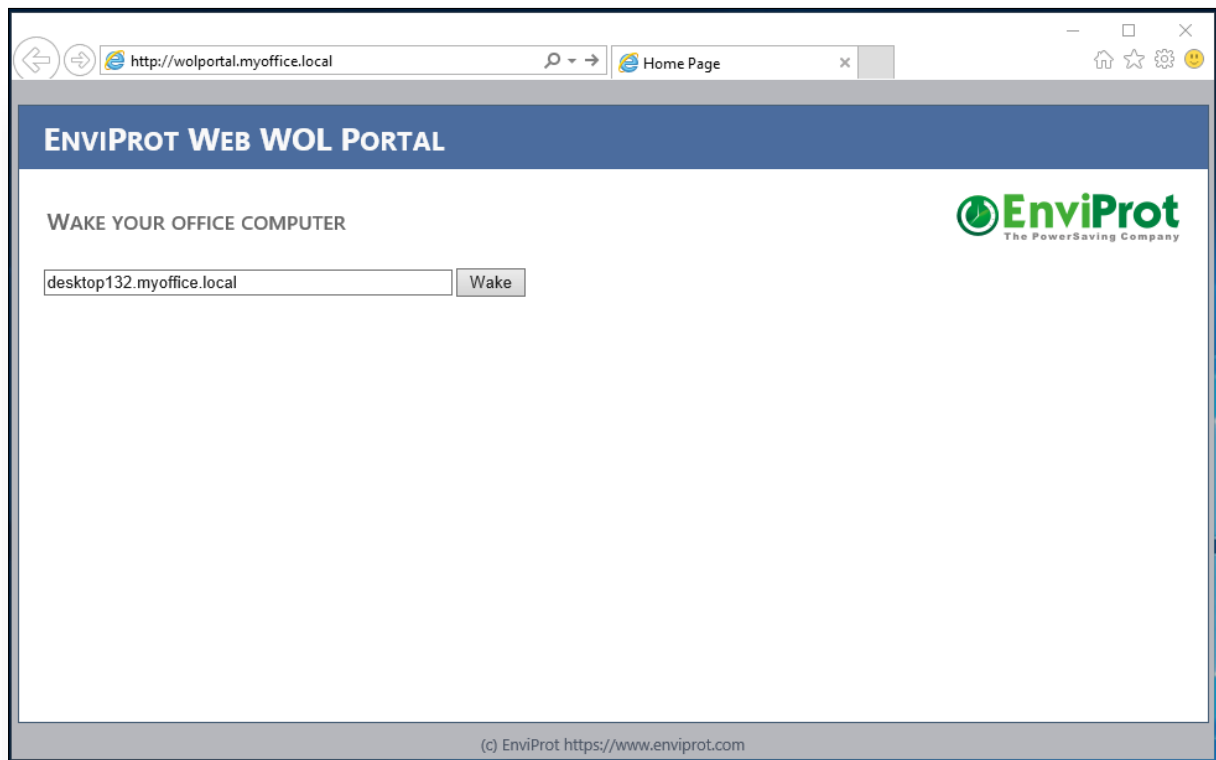


EnviProt WEB WOL PORTAL

Quick Installation Guide

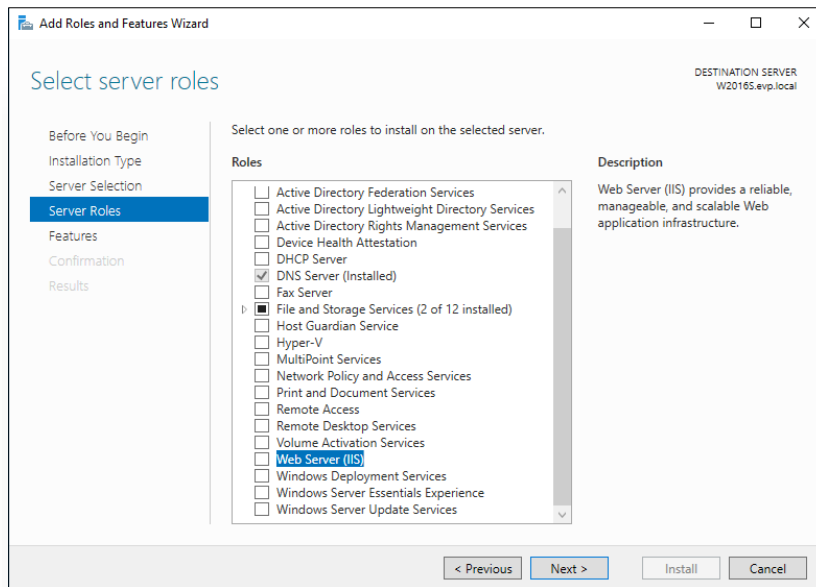
Overview

The EnviProt WEB WOL Portal (EWWP) is an extension to an existing Auto Shutdown Manager infrastructure. Please notice that this is a free prototype tool, use it on your own risk. It is free of charge and can be used by everyone in a private or business manner.

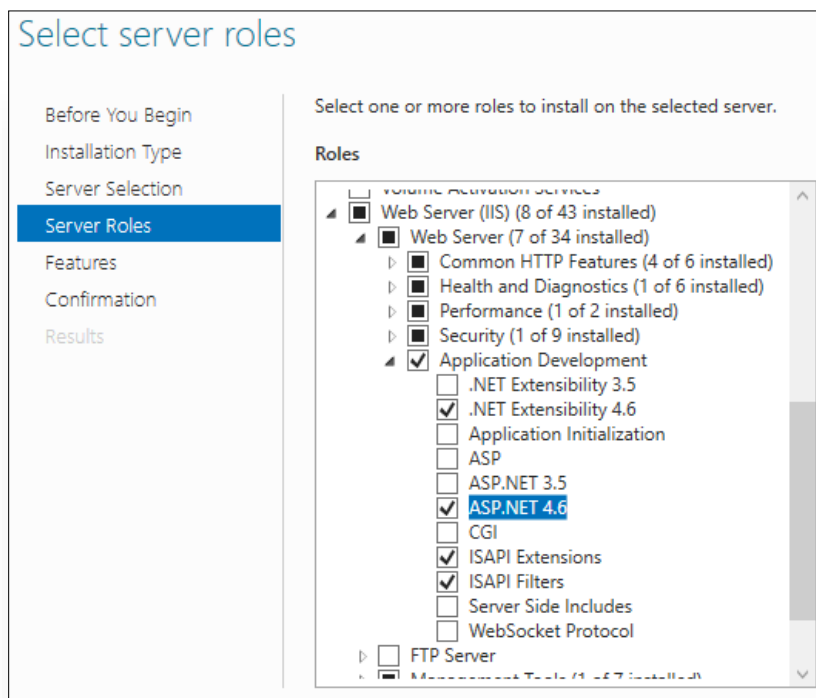


The EnviProt WEB WOL Portal can be run within the ISS (Microsoft Internet Information Server) infrastructure.

ISS must be installed and activated on your intranet first:



Please make also sure that the Server Role Application Development / ASP.NET 4.x is enabled.



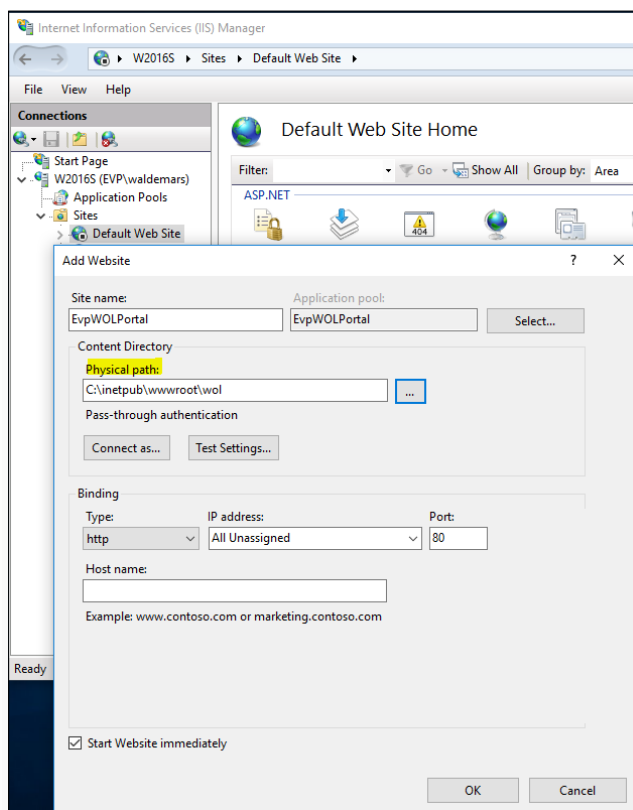
For details and guidelines how to install and securely operate the ISS infrastructure please follow the instructions and recommendations from Microsoft.

Installation

The Auto Shutdown Manager Server and ISS can be operated on the same machine, or on different machines.

If ISS and the Auto Shutdown Manager Server are on different machines, an Auto Shutdown Manager client must be used on the ISS machine. The client should be connected to the Auto Shutdown Manager Server and configured to operate in a 24/7 mode.

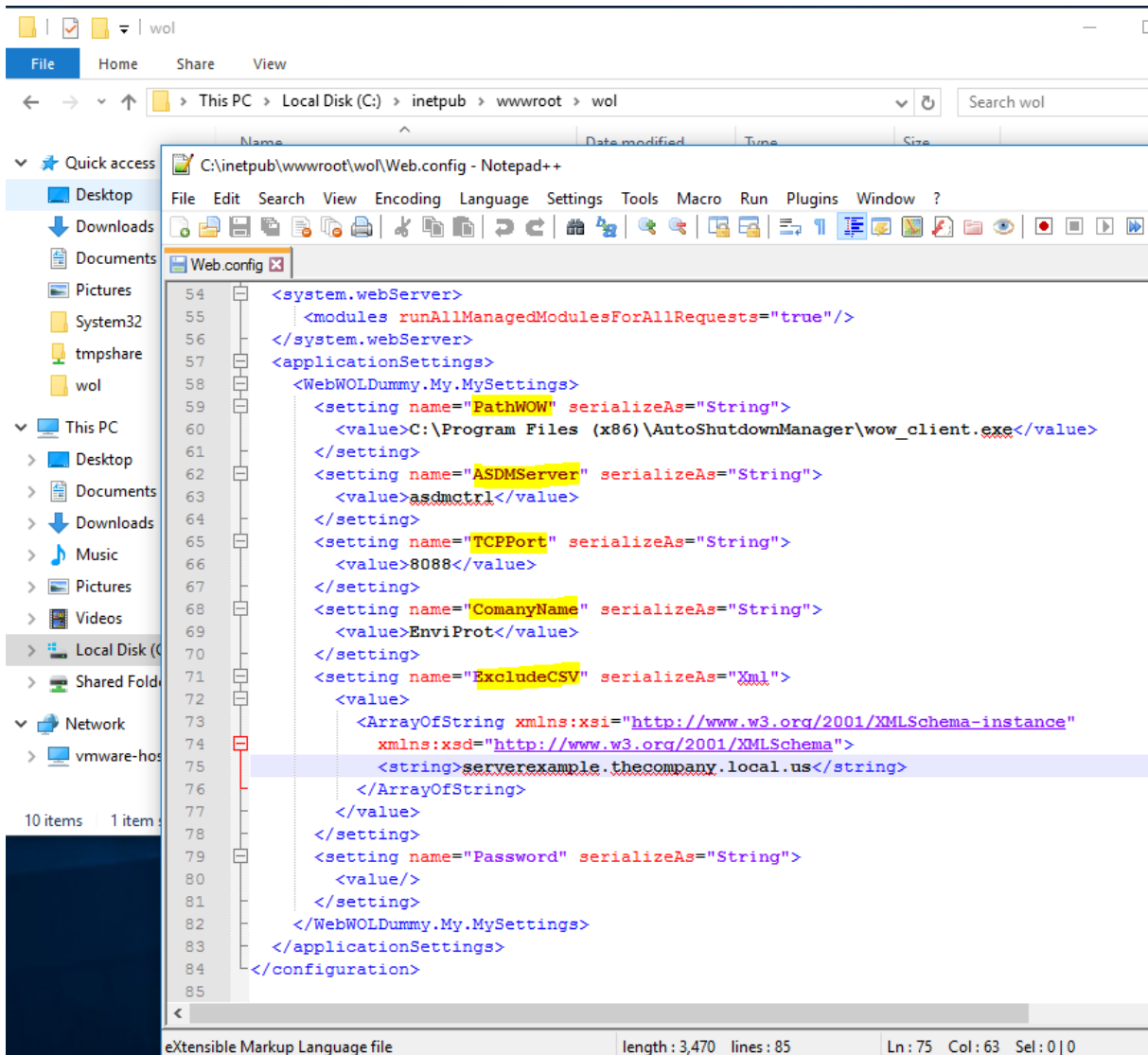
Create a new Site within the ISS Manager:



Next, extract the EVPWebWolPortal.zip files to the folder specified in “Physical path” for the site.

Configuration

Navigate to the specified site folder and open the file called Web.config



```

54 <system.webServer>
55 <modules runAllManagedModulesForAllRequests="true"/>
56 </system.webServer>
57 <applicationSettings>
58 <WebWOLDummy.My.MySettings>
59 <setting name="PathWOW" serializeAs="String">
60 <value>C:\Program Files (x86)\AutoShutdownManager\wow_client.exe</value>
61 </setting>
62 <setting name="ASDMServer" serializeAs="String">
63 <value>asdmsrtr</value>
64 </setting>
65 <setting name="TCPPort" serializeAs="String">
66 <value>8088</value>
67 </setting>
68 <setting name="ComanyName" serializeAs="String">
69 <value>EnviProt</value>
70 </setting>
71 <setting name="ExcludeCSV" serializeAs="Xml">
72 <value>
73 <ArrayOfString xmlns:xsi="http://www.w3.org/2001/XMLSchema-instance"
74 xmlns:xsd="http://www.w3.org/2001/XMLSchema">
75 <string>serverexample.thecompany.local.us</string>
76 </ArrayOfString>
77 </value>
78 </setting>
79 <setting name="Password" serializeAs="String">
80 <value/>
81 </setting>
82 </WebWOLDummy.My.MySettings>
83 </applicationSettings>
84 </configuration>
85
  
```

eXtensible Markup Language file length : 3,470 lines : 85 Ln : 75 Col : 63 Sel : 0 | 0

There you will find 5 different settings that should be adapted to your situation:

- 1) PathWOW – This is the path to the EnviProt tool “WOW Client” that comes with the Auto Shutdown Manager installation. It is typically installed within the Auto Shutdown Manager installation folder
- 2) ASDMServer – enter your Auto Shutdown Manager Server IP address or DNS name.
- 3) TCPPort – make sure that the TCP port is the same as on your Auto Shutdown Manager server. This is 8088 by default.
- 4) CompanyName – this adds the company name to the title of the portal.

- 5) ExcludeCSV – here, you can enter Regex compliant computer name filters that you want to be excluded from the WOL process.

Please use for each entry a new line like:

```
<string>serverexample.thecompany.local.us</string>
```

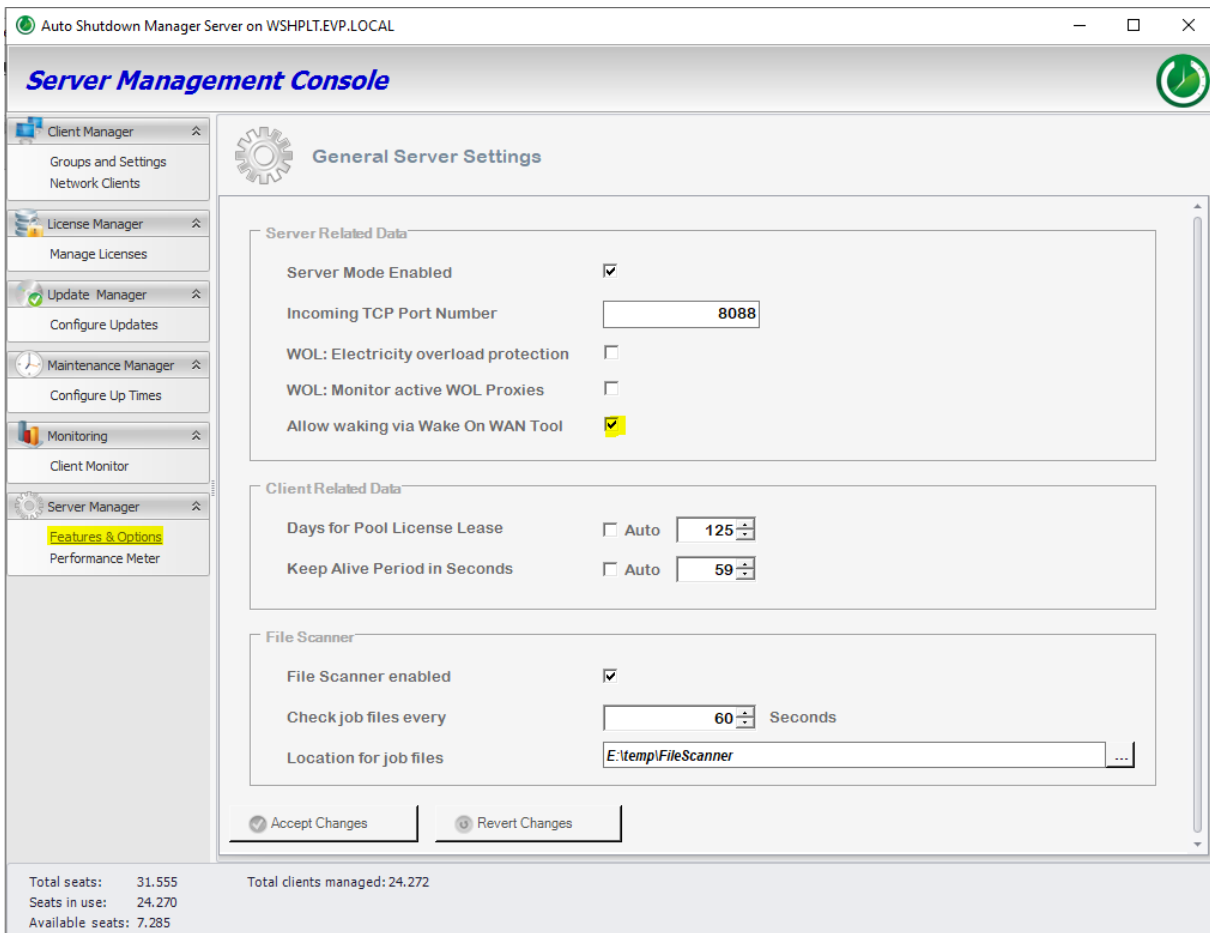
In this example, the PC called “serverexample.thecompany.local.us” cannot be awoken via this WOL Portal and will be excluded.

```
<string>main\d\d\d\d.*.local</string>
```

In this example all PCs starting with “main” followed by exactly 3 digits and ending with “.local” such as main123.evp.local will be excluded, but main1.evp.local would be allowed.

Please consider the Internet for Regex details, examples and online testing sites.

Finally, please make sure that the Auto Shutdown Manager server is configured to allow remote WOL waking:



The screenshot displays the 'Server Management Console' for the 'Auto Shutdown Manager Server on WSHPLT.EVP.LOCAL'. The left sidebar contains a navigation menu with the following items: Client Manager, Groups and Settings, Network Clients, License Manager, Manage Licenses, Update Manager, Configure Updates, Maintenance Manager, Configure Up Times, Monitoring, Client Monitor, Server Manager, Features & Options (highlighted), and Performance Meter. The main content area is titled 'General Server Settings' and is divided into three sections: 'Server Related Data', 'Client Related Data', and 'File Scanner'. In the 'Server Related Data' section, 'Server Mode Enabled' is checked, 'Incoming TCP Port Number' is set to 8088, 'WOL: Electricity overload protection' is unchecked, 'WOL: Monitor active WOL Proxies' is unchecked, and 'Allow waking via Wake On WAN Tool' is checked. In the 'Client Related Data' section, 'Days for Pool License Lease' is set to 125 (with an 'Auto' checkbox) and 'Keep Alive Period in Seconds' is set to 59 (with an 'Auto' checkbox). In the 'File Scanner' section, 'File Scanner enabled' is checked, 'Check job files every' is set to 60 seconds, and the 'Location for job files' is 'E:\temp\FileScanner'. At the bottom of the settings area are 'Accept Changes' and 'Revert Changes' buttons. The status bar at the very bottom shows: 'Total seats: 31.555', 'Seats in use: 24.270', 'Available seats: 7.285', and 'Total clients managed: 24.272'.



Please contact us at support@enviprot.com if you have any questions, ideas or improvement requests.